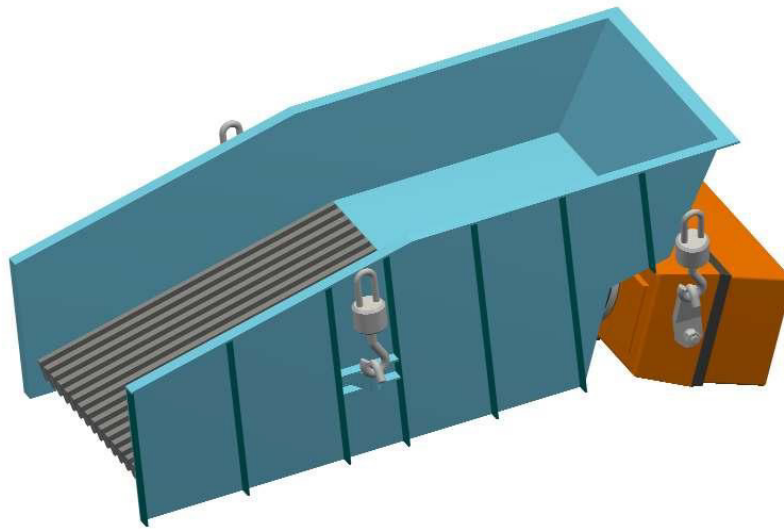


Bar vibrating feeder **with electro-magnetic drive** **type PWRu**



Advantages:

- initial segregation
- simplicity of operation and handling
- high application versatility
- ability of stepless adjustment and remote control

Equipment description:

Grid vibrating feeders with electro-magnetic drive from the PWRu series with a trough of a rectangular cross-section and grid are designed for transport or dosage of loose materials with simultaneous screening of undersized grains. They are used where it is required to specify the granulation accuracy of the fed material for further processing. The device can be performed in a dustproof edition, thus it has a separated upper cover.

Grid vibrating feeder is comprised of a trough, vibrator, shock absorbers and power supply, which controls the vibrator and the device's operation. The trough is a structure welded from sheet metal or screwed. The trough body included mounted grids, through which the sub-fraction flows. We have two types of troughs in terms of the mounting method - suspended on shock absorbers (PWRuw) and founded on supports by means of shock absorbers (PWRus). The trough's back wall includes a screwed electro-magnetic vibrator, which by orientation of vibrations causes an exciting force acting on the fed factor. The supply rectifier has two switchable voltage adjustment ranges and the ability of process line remote control. Immediate halting of the transported material takes place after turning off.

Upon request of the Customer, all elements in contact with the fed material can be performed from stainless steel or other materials.

Technical data:

Capacity [m ³ /h]	up to 160
Applied vibrator	UOWP2 – UOWP5
Trough length [mm]	1100 – 2200
Trough width [mm]	400 – 1000
Supply voltage [V]	230/400/500
Total weight [kg]	280 – 1900

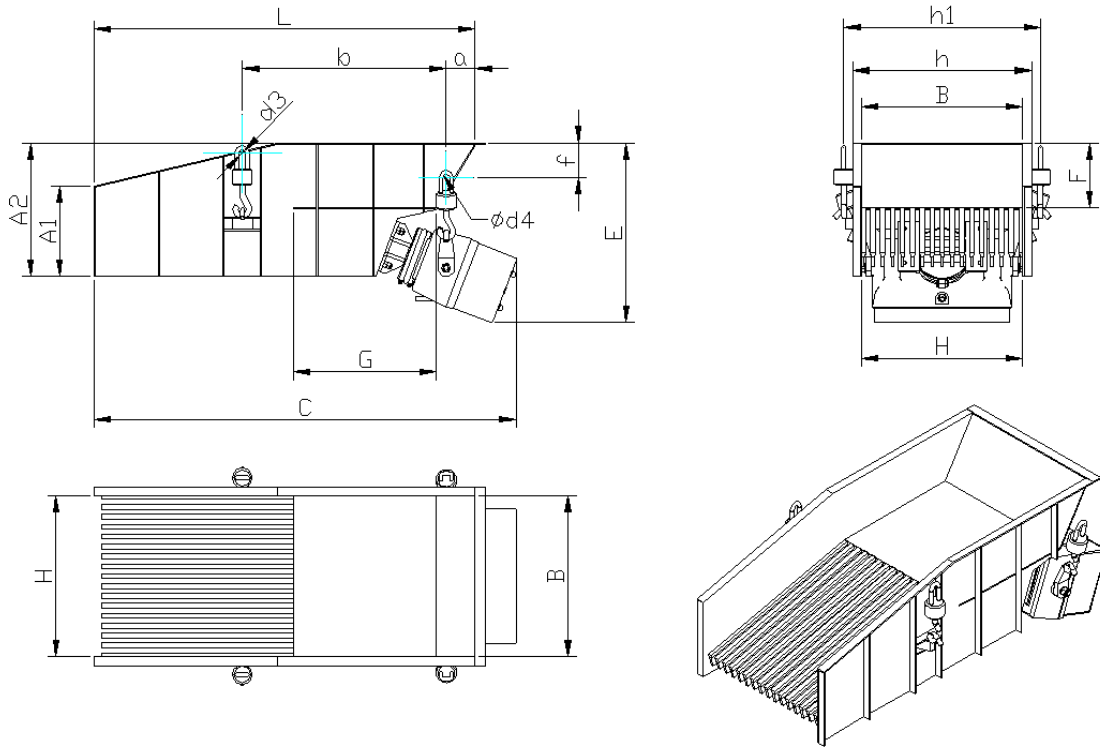
For the best selection of the equipment please contact our technical office, tel.: +48 77/470 04 97.

Tel./Fax: +48 77 / 474 50 05
Tel./Fax: +48 77 / 474 25 92

www.OFAMA.eu
e-mail: ofama@ofama.eu

OFAMA Sp. z o.o.
ul. Niemodlińska 87
PL, 45-864 Opole

Bar vibrating feeder with electro-magnetic drive type PWRu



Technical data:

Type	B	L	Vibrator	Theoretical yield	Weight	$\frac{A}{A_1}$	C	E	F
	mm	mm		m ³ /h	kg				
PWRu - 40	400	1100	UOWP2	40	280	$\frac{400}{300}$	1300	590	160
PWRu - 63	630	1400	UOWP3	70	650	$\frac{500}{365}$	1600	720	200
PWRu - 80	800	2000	UOWP4	120	1600	$\frac{700}{520}$	2420	1040	250
PWRu - 100	1000	2200	UOWP5	160	1900	$\frac{720}{530}$	2600	1100	250

G	H	a	b	c	E	f	$\frac{g}{g_1}$	$\frac{h}{h_1}$	$\frac{D_1}{d_1}$	$\frac{D_2}{d_2}$	$\frac{d_3}{d_4}$
550	480	140	555	40	150	50	$\frac{570}{640}$	$\frac{570}{630}$	$\frac{68}{20}$	$\frac{90}{30}$	$\frac{20}{30}$
650	730	150	735	40	220	50	$\frac{840}{920}$	$\frac{840}{950}$	$\frac{90}{30}$	$\frac{100}{25}$	$\frac{30}{40}$
900	940	100	1060	80	80	100	$\frac{1070}{1120}$	$\frac{1050}{1200}$	$\frac{125}{36}$	$\frac{100}{25}$	$\frac{40}{50}$
1120	1150	180	1350	80	100	135	$\frac{1270}{1170}$	$\frac{1250}{1250}$	$\frac{125}{36}$	$\frac{100}{25}$	$\frac{40}{50}$